



*Black frame product can be provided upon request.

SUPERPOWER

CS6K-305 | 310 | 315 | 320MS (IEC1000V)

CS6K-305 | 310 | 315 | 320MS (IEC1500V)

Canadian Solar's new SuperPower modules with Mono-PERC cells significantly improve efficiency and reliability. The innovative technology offers superior low irradiance performance in the morning, in the evening and on cloudy days, increasing the energy output of the module and the overall yield of the solar system.



linear power output warranty*



enhanced product warranty on materials and workmanship*

*According to the applicable Canadian Solar Limited Warranty Statement.

KEY FEATURES



11 % more power than conventional modules



High PTC rating of up to: 92.03%



Improved energy production due to low temperature coefficients



IP68 junction box for long-term weather endurance



Heavy snow load up to 6000 Pa, wind load up to 4000 Pa *

MANAGEMENT SYSTEM CERTIFICATES*

ISO 9001:2015 / Quality management system

ISO 14001:2015 / Standards for environmental management system

OHSAS 18001:2007 / International standards for occupational health & safety

PRODUCT CERTIFICATES*

IEC 61215 / IEC 61730: VDE / CE / MCS

UL 1703 / IEC 61215 performance: CEC listed (US)

UL 1703: CSA / IEC 61701 ED2: VDE / IEC 62716: VDE

IEC60068-2-68:SGS

Take-e-way



* As there are different certification requirements in different markets, please contact your local Canadian Solar sales representative for the specific certificates applicable to the products in the region in which the products are to be used.

CANADIAN SOLAR INC. is committed to providing high quality solar products, solar system solutions and services to customers around the world. No. 1 module supplier for quality and performance/price ratio in IHS Module Customer Insight Survey. As a leading PV project developer and manufacturer of solar modules with over 36 GW deployed around the world since 2001.

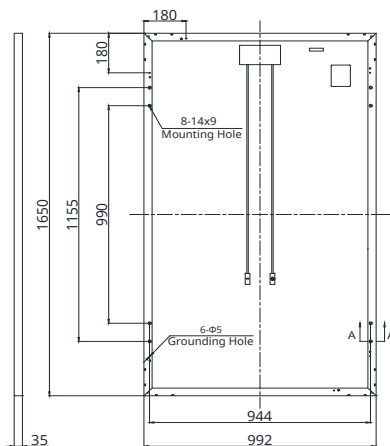
*For detail information, please refer to Installation Manual.

CANADIAN SOLAR INC.

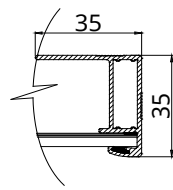
Canadian Solar MSS (Australia) Pty Ltd., 44 Stephenson St, Cremorne VIC 3121, Australia
support@canadiansolar.com, www.canadiansolar.com/au

ENGINEERING DRAWING (mm)

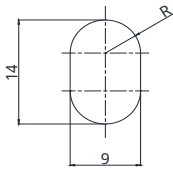
Rear View



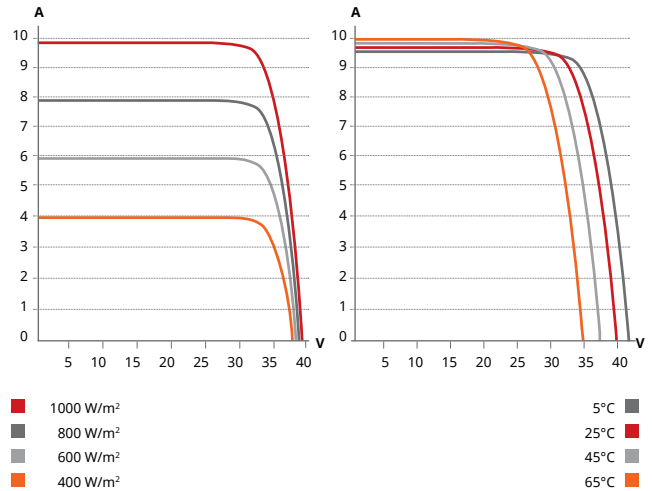
Frame Cross Section A-A



Mounting Hole



CS6K-305MS / I-V CURVES



ELECTRICAL DATA | STC*

CS6K	305MS	310MS	315MS	320MS
Nominal Max. Power (Pmax)	305 W	310 W	315 W	320 W
Opt. Operating Voltage (Vmp)	32.7 V	32.9 V	33.1 V	33.3 V
Opt. Operating Current (Imp)	9.33 A	9.43 A	9.52 A	9.61 A
Open Circuit Voltage (Voc)	39.9 V	40.1 V	40.3 V	41.3 V
Short Circuit Current (Isc)	9.91 A	9.99 A	10.07 A	10.18 A
Module Efficiency	18.63%	18.94%	19.24%	19.55%
Operating Temperature	-40°C ~ +85°C			
Max. System Voltage	1000 V (IEC/UL) or 1500 V (IEC/UL)			
Module Fire Performance	TYPE 1 (UL 1703) or CLASS C (IEC 61730)			
Max. Series Fuse Rating	15 A			
Application Classification	Class A			
Power Tolerance	0 ~ + 5 W			

* Under Standard Test Conditions (STC) of irradiance of 1000 W/m², spectrum AM 1.5 and cell temperature of 25°C. Measurement uncertainty: ±3 % (Pmax).

ELECTRICAL DATA | NMOT*

CS6K	305MS	310MS	315MS	320MS
Nominal Max. Power (Pmax)	225 W	229 W	233 W	236 W
Opt. Operating Voltage (Vmp)	30.2 V	30.4 V	30.6 V	30.8 V
Opt. Operating Current (Imp)	7.46 A	7.54 A	7.61 A	7.69 A
Open Circuit Voltage (Voc)	37.3 V	37.5 V	37.7 V	38.6 V
Short Circuit Current (Isc)	8.00 A	8.06 A	8.13 A	8.22 A

* Under Nominal Module Operating Temperature (NMOT), irradiance of 800 W/m², spectrum AM 1.5, ambient temperature 20°C, wind speed 1 m/s.

* The specifications and key features contained in this datasheet may deviate slightly from our actual products due to the on-going innovation and product enhancement. Canadian Solar Inc. reserves the right to make necessary adjustment to the information described herein at any time without further notice. Please be kindly advised that PV modules should be handled and installed by qualified people who have professional skills and please carefully read the safety and installation instructions before using our PV modules.

MECHANICAL DATA

Specification	Data
Cell Type	Mono-crystalline, 6 inch
Cell Arrangement	60 (6×10)
Dimensions	1650×992×35 mm (65.0×39.1×1.38 in)
Weight	18.2 kg (40.1 lbs)
Front Cover	3.2 mm tempered glass
Frame Material	Anodized aluminium alloy
J-Box	IP68, 3 diodes
Cable	4.0 mm ² (IEC), 12 AWG (UL), 1000 mm (39.4 in)
Connector	T4-PC-1 (IEC 1000 V) or PV-KST4/xy-UR, PV-KBT4/xy-UR (IEC 1000 V) or T4-PPE-1 (IEC 1500 V) or PV-KST4-EVO2/XY, PVKBT4-EVO2/XY (IEC 1500 V) or UTXCFA4AM, UTXCMA4AM (IEC1500V)
Per Pallet	30 pieces
Per Container (40' HQ)	840 pieces

TEMPERATURE CHARACTERISTICS

Specification	Data
Temperature Coefficient (Pmax)	-0.38 % / °C
Temperature Coefficient (Voc)	-0.29 % / °C
Temperature Coefficient (Isc)	0.05 % / °C
Nominal Module Operating Temperature (NMOT)	43 ± 3 °C

PARTNER SECTION



CANADIAN SOLAR INC.

Canadian Solar MSS (Australia) Pty Ltd., 44 Stephenson St, Cremorne VIC 3121, Australia
support@canadiansolar.com, www.canadiansolar.com/au